



... warm attire, Mr. George Boddy, a Governor, returns from a shooting trip into the north-west Otago) with a heavy load of 21 near Government cullers shot 62,613 deer, 35,119 chamois, pigs, and other noxious animals.

... different in particular geology, and is a very wide out for integration of a exists at the major re- investigation and opossums, y accepted s in forest osion, rests and Forest ce employs ualified bio- n the deer

Riney, an seven years g basic re- lem of deer in the high a New Zea- roached his judicious and ideas.

quite a num- bers in which t of his de- borious in- al parts of

TY

apers, how- necessity to what is the re the prob-

" he writes ed in 1956, s desirable orkers con- problems in ose who are ge and con- from other ing to dis- effort most perhaps be definition of o judge the n area is y facilitate orities for y organisa- the future elopment of

the specific ed as criti- sons? When uestion is it of priori- ed research s should be

hed in this ney it is ous authori- h noxious servation of ion of high- ance as to S.

PLE

the critical deer and are con- cide with critical by est Service, and Rivers the Lands ent. e heaviest the South

... the mountains in the West Coast areas. In fact, the pellet counts showed no such decrease in the winter months in spite of the fact that in this area winter is the season with the most rigorous weather. Deer use forest and scrub areas considerably more in winter than in summer, and there was some indication that they use southern more than northern aspects."

DECREASE

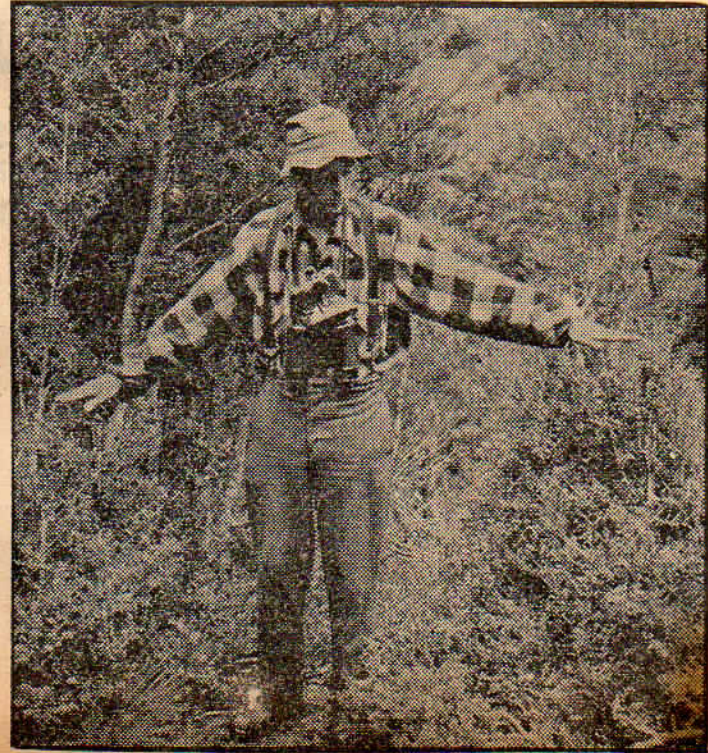
In the Pararaki stream in the Haurangi Ranges (near Cape Palliser), Mr. Riney conducted a detailed study of animal droppings before and after a shoot over 7430 acres, most of which was forested. In 44 days of shooting, the cullers shot 86 red deer, 117 goats, 10 wild pigs and 18 wild sheep. Counts were taken a month before the shoot, one month before the end of the four-month hunt, and one month, 22 months, and 34 months after the hunt.

These counts showed that animal droppings decreased significantly following the hunt, and that 22 months later droppings of red deer, pigs, and opossums had increased. Goat droppings were fewer, even 22 months after the hunt.

Within 22 months of the end of the shoot evidence showed that in the case of deer the population had almost been restored, opossums had increased, and so had pigs. Only in the case of goats was there a decrease.

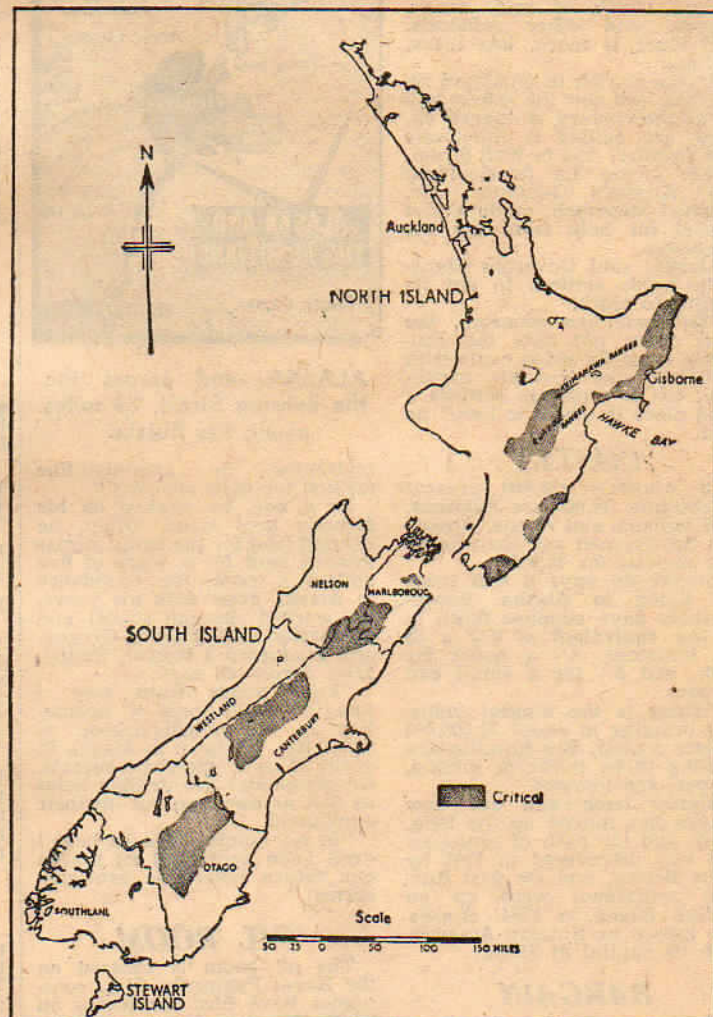
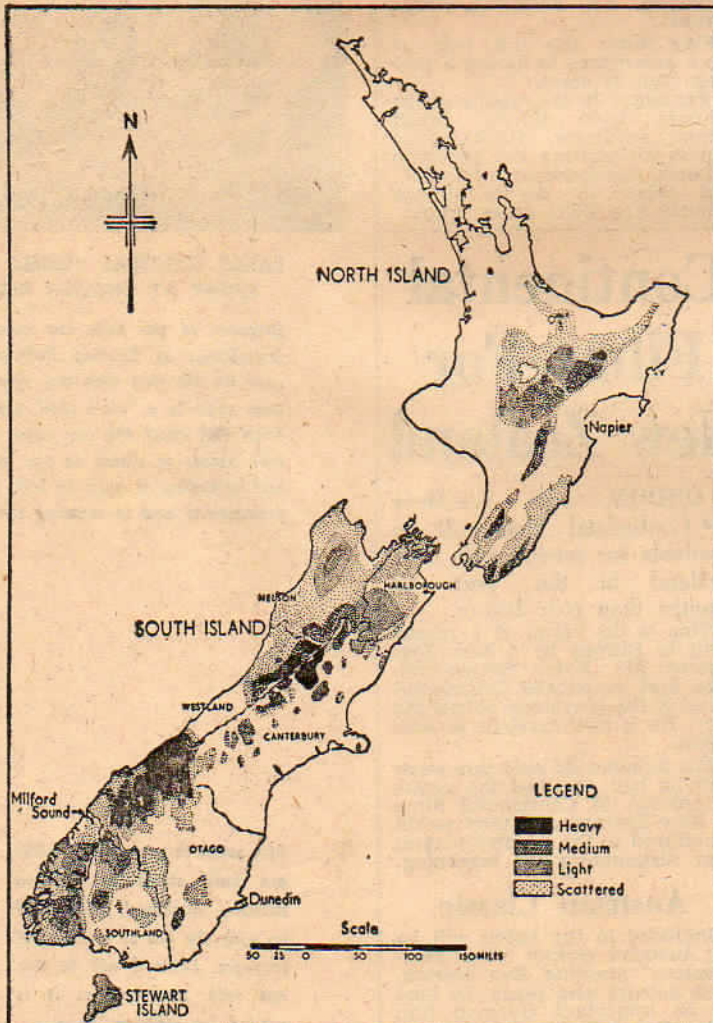
Mr. Riney makes the conclu-

Cameron Mountains in Florida - hares occurred.



MR. THANE RINEY, biologist with the State Forest Service, investigating deer problems, shows where deer have eaten the tender foliage on vegetation beside a forest track to leave a hedge effect.

Heavy Deer Infestation Not Necessarily Erosion Areas



LEFT: Distribution and density of deer in New Zealand in 1951 from assessments made by officers of the Wildlife Division of the Department of Internal Affairs. Areas north of Auckland containing scattered deer not shown. Note that heavy infestations of deer do not coincide with areas marked as critical in the adjoining map.

RIGHT: Areas regarded as critical in 1951 by the Soil Conservation and Rivers Control Council. In order of priority, critical areas were listed as (1) north of Gisborne; (2a) Marlborough, and (2b) Central Otago; (3) Hawke's Bay and parts of ranges west of the bay; (4) Canterbury; (5) ... (6) South Otago; (7) West Otago; (8) ...